



# PEPSCON 2015

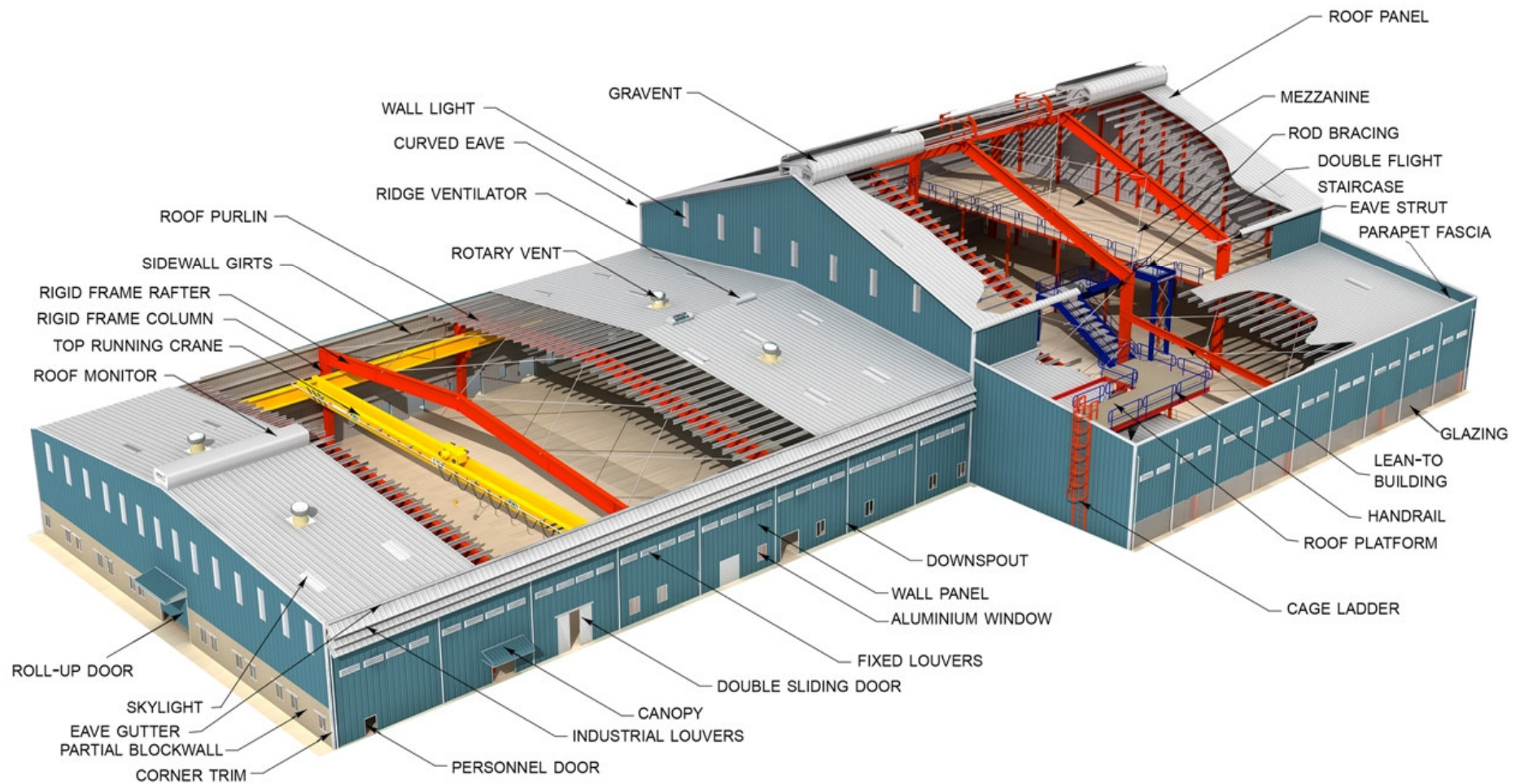
**Venue:** KL University

**Date:** 07/03/2015

**PENNAR ENGINEERED BUILDING SYSTEMS LTD.**

**An ISO 9001-2008 COMPANY**

# INTRODUCTION -PRE ENGINEERED BUILDING



# PEB - EVOLUTION

## Early 1900s

Concept of Metal Buildings originated in U.S.A

## 1923

American Institute of Steel Construction (AISC) was formed

## WORLD WAR –II

Aircraft hangers used by U.S army were built using PEB concept

## POST WORLD WAR-II

Economic Boom

## Late 1950's & Early 1960's

Computerized design became limitless

The term “Pre-Engineered Buildings” came into existence

## POST 1990

PEB dominated the low rise non residential buildings market.

Automatic production lines for primary , secondary & sheeting



- ❖ PEB entered Indian markets in the late 1990's
- ❖ FDI inflow accelerated PEB acceptance and usage in early 2000's
- ❖ The current pre-engineered steel buildings market size is 0.75 million MT per annum.
- ❖ Currently the industry is growing at the rate of 12 to 15 % per year
- ❖ Revolution in eco-friendly Green Building concept



# ADVANTAGES

1. Ability to span long distance
2. Faster occupancy
3. Cost efficiency
4. Flexibility of expansion
5. Low maintenance
6. Earthquake & Hurricane resistant
7. Single-source responsibility
8. Factory controlled Quality





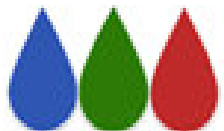
## Pennar Industries

- Strong presence in Automotive, Infrastructure, Railways and Environmental sector



## PEBS Pennar

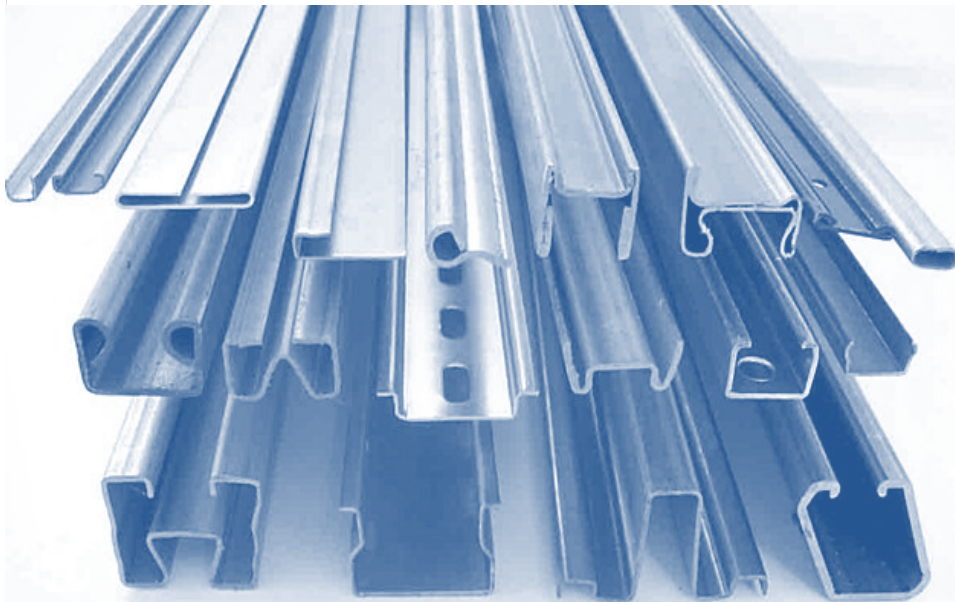
- Seven manufacturing facilities in India
- Largest Cold Formed steel profile manufacturer in India



## Pennar Enviro

- Operation history of over 35 years
- Sales Support and Marketing with 35 branches across India

## Products



Cold Roll Steel Strips and Tubes  
Profiles for Automobiles  
Road Safety Barriers  
Railway Coach Components  
Engineering and Auto Components  
Building Components  
Pollution Control Equipment



# INTRODUCTION TO PEBS PENNAR

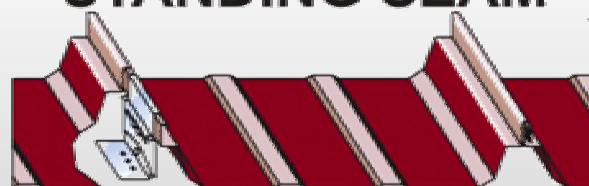
- ❖ A subsidiary of Pennar Industries Ltd., Hyderabad
- ❖ Incorporated in 2008 & commercial production in Jan 2010
- ❖ Involved in design, fabrication, supply & erection of:
  - ◆ Pre-engineered steel buildings
  - ◆ Solar structures
  - ◆ Cold formed buildings
  - ◆ Hi-rise buildings & structural steel
  - ◆ Industrial racking system
  - ◆ Transmission & Communication Towers
- ❖ Engineering Center & Manufacturing Plant at Hyderabad



## TECHNICAL ASSOCIATION



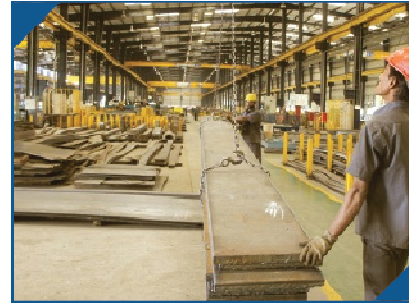
**DOUBLE LOK® 360°  
STANDING SEAM**



PEBS Pennar has Technical Association with NCI Group, USA for Double Lok® Standing Seam Roofing System, proven weather tight technology since 60 years in USA

**NCI GROUP, INC. USA**

# MANUFACTURING FACILITY



State-of-the-art manufacturing facility with a production capacity of 90,000 MT per annum



# ENGINEERING CODES & SOFTWARE

## SOFTWARE

- ❖ Metal building Software – MBS, USA
- ❖ Staad Pro V8i - US Code and IS Code – Bentley corporation, USA
- ❖ Auto CAD – Autodesk Inc. USA
- ❖ Estimation Software – In-house developed
- ❖ 3D Max Studio - Autodesk Inc., USA
- ❖ X-Steel (Tekla structure) – Trimble , Finland

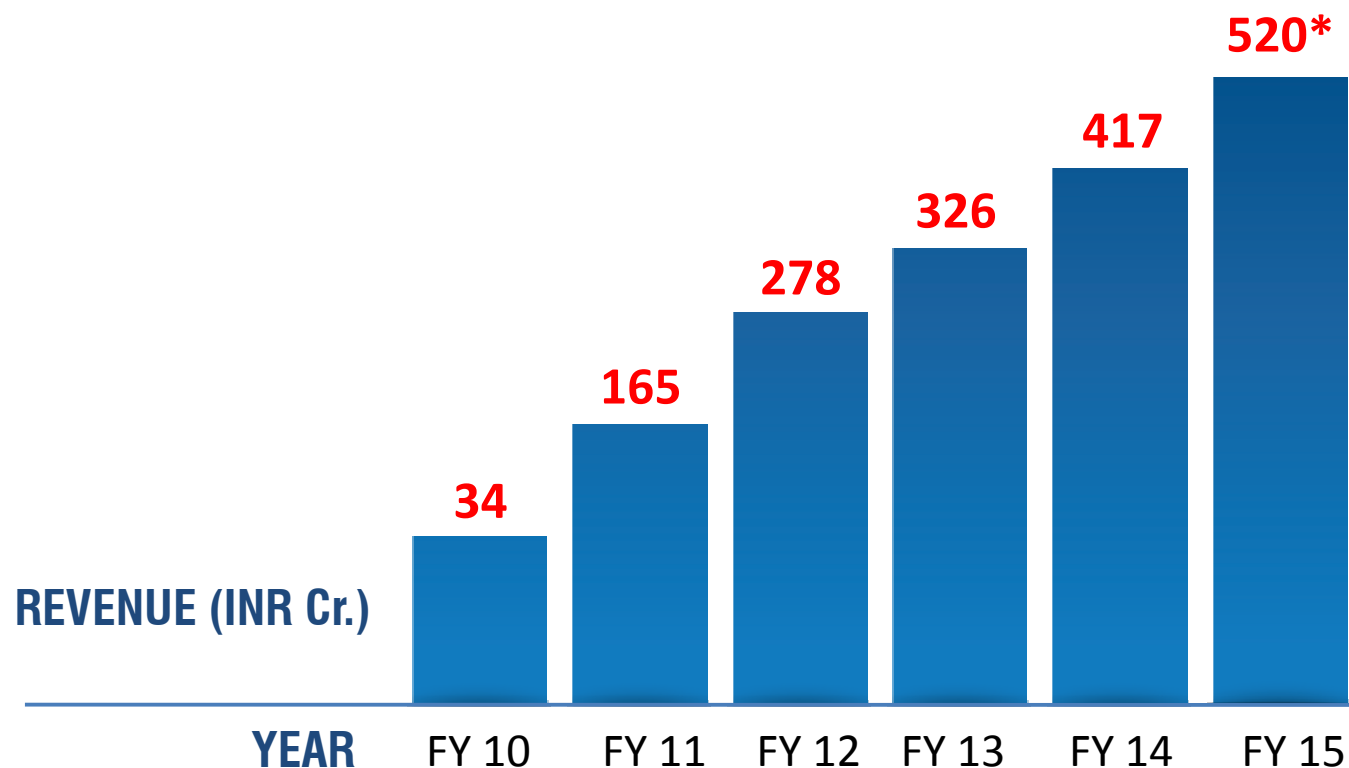
## CODES

- American
- Euro
- British
- Indian



# THE GROWTH STORY

## Annual Turnover from FY10 to FY14



*\*Projected revenue for FY-2015*

**Procured orders worth over Rs. 2,200 Cr.  
from the date of inception**

# AWARDS



Hyderabad Management  
Association (HMA) Awards  
-2013



Infrastructure Company of the Year  
PEB Contractor of the Year



Excellence in Corporate  
Governance -2014

*The Institution of Engineers ( India )*

Industry Excellence Award 2013  
Industry Excellence Award 2014



INS DAG National Award 2014

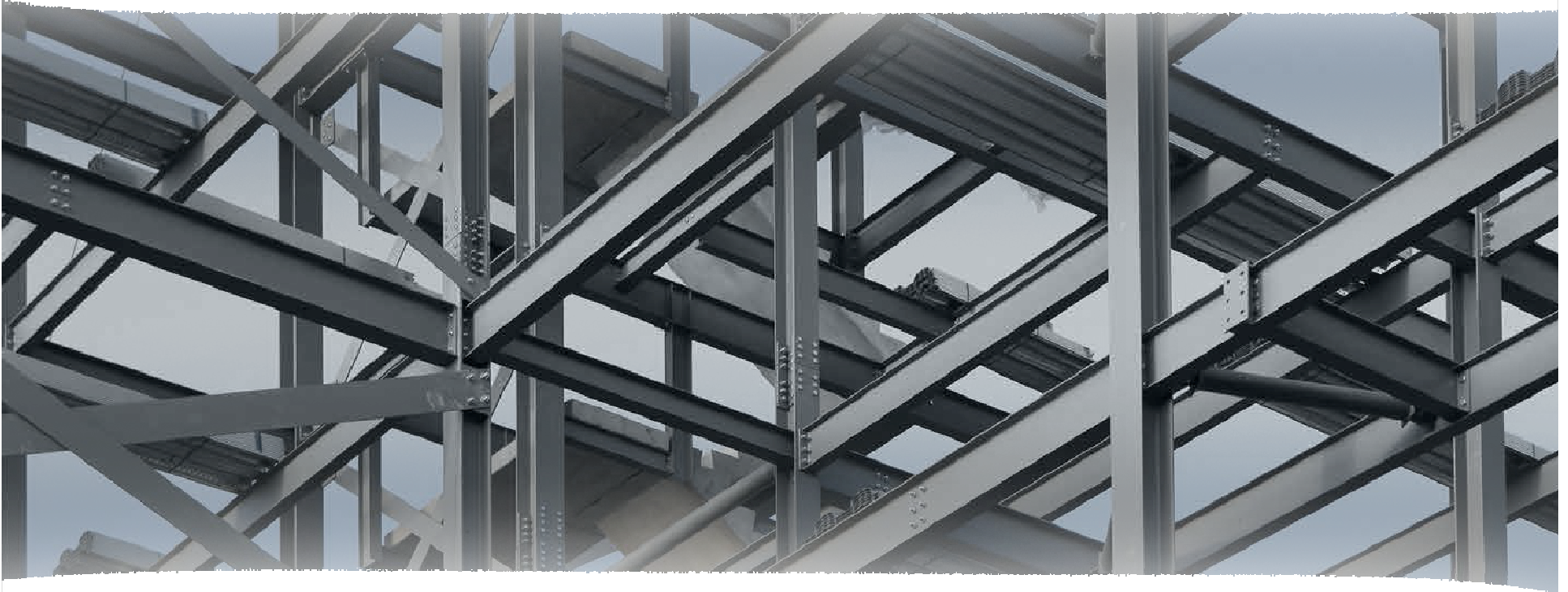
**VCCIRCLE**

Manufacturing Company of  
the year 2015



Vishwakarma Award 2015





# STRUCTURAL STEEL SOLUTIONS

# STRUCTURAL STEEL

**Structural Steel  
Products Include:**

Steel

Hot-Rolled Sections

Structural

Built Up Sections

Sections

Cold Formed Sections

# STRUCTURAL STEEL APPLICATIONS

- ❖ Support Structures
- ❖ Boiler Structures
- ❖ Pre-engineered Buildings
- ❖ Solar Structures
- ❖ Heavy Fabrication
- ❖ Pipe Rack Structures for Oil & Gas
- ❖ Communication & Transmission Towers









# Steel Structures for Multistoried Buildings

**FASTER CONSTRUCTION ... EARLY OCCUPATION...**



# Sequence of Installation and time lines

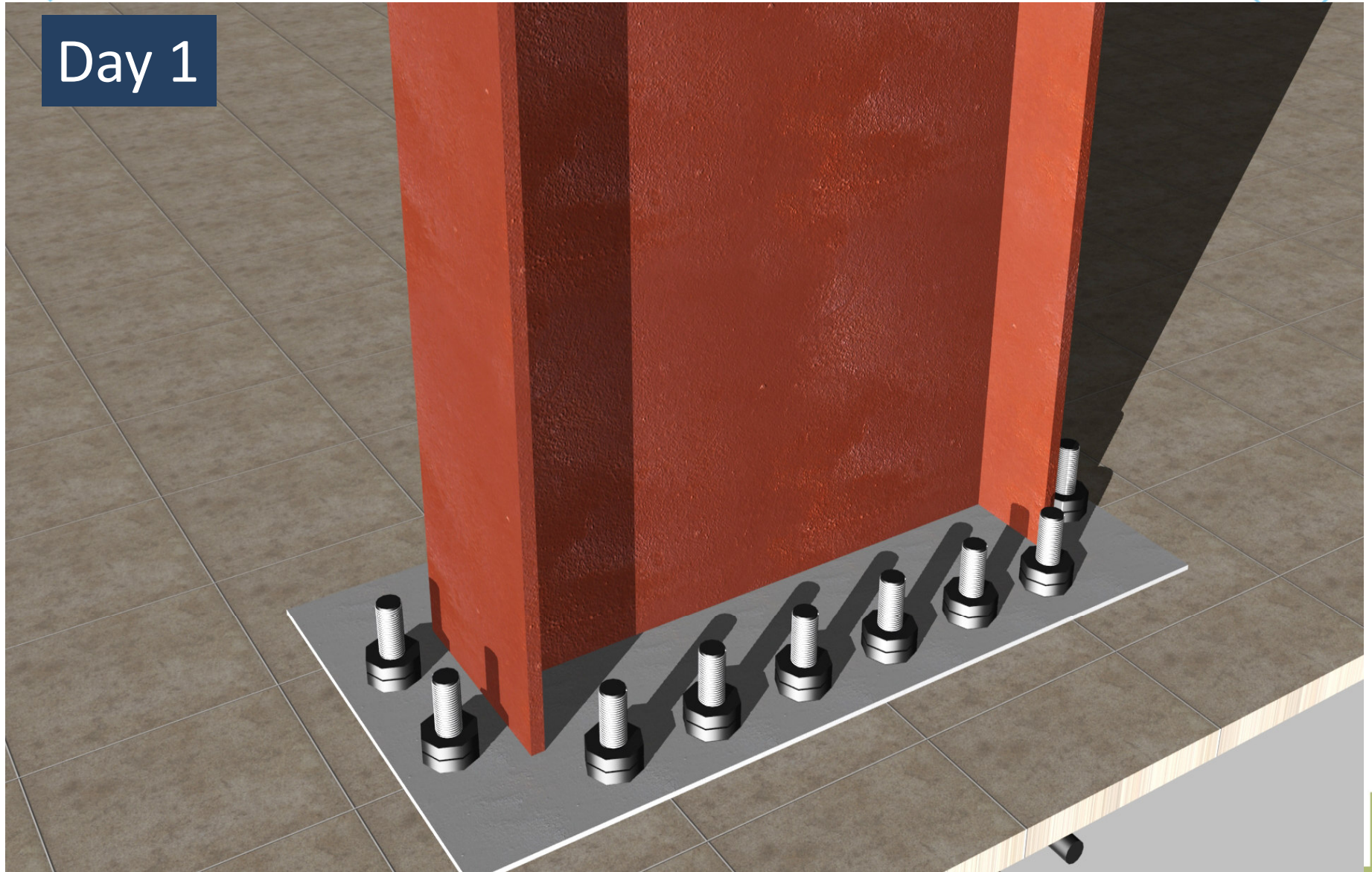
For a Multi Story building of  
10 floors + 4 floors basement and  
an area 12Lac sft



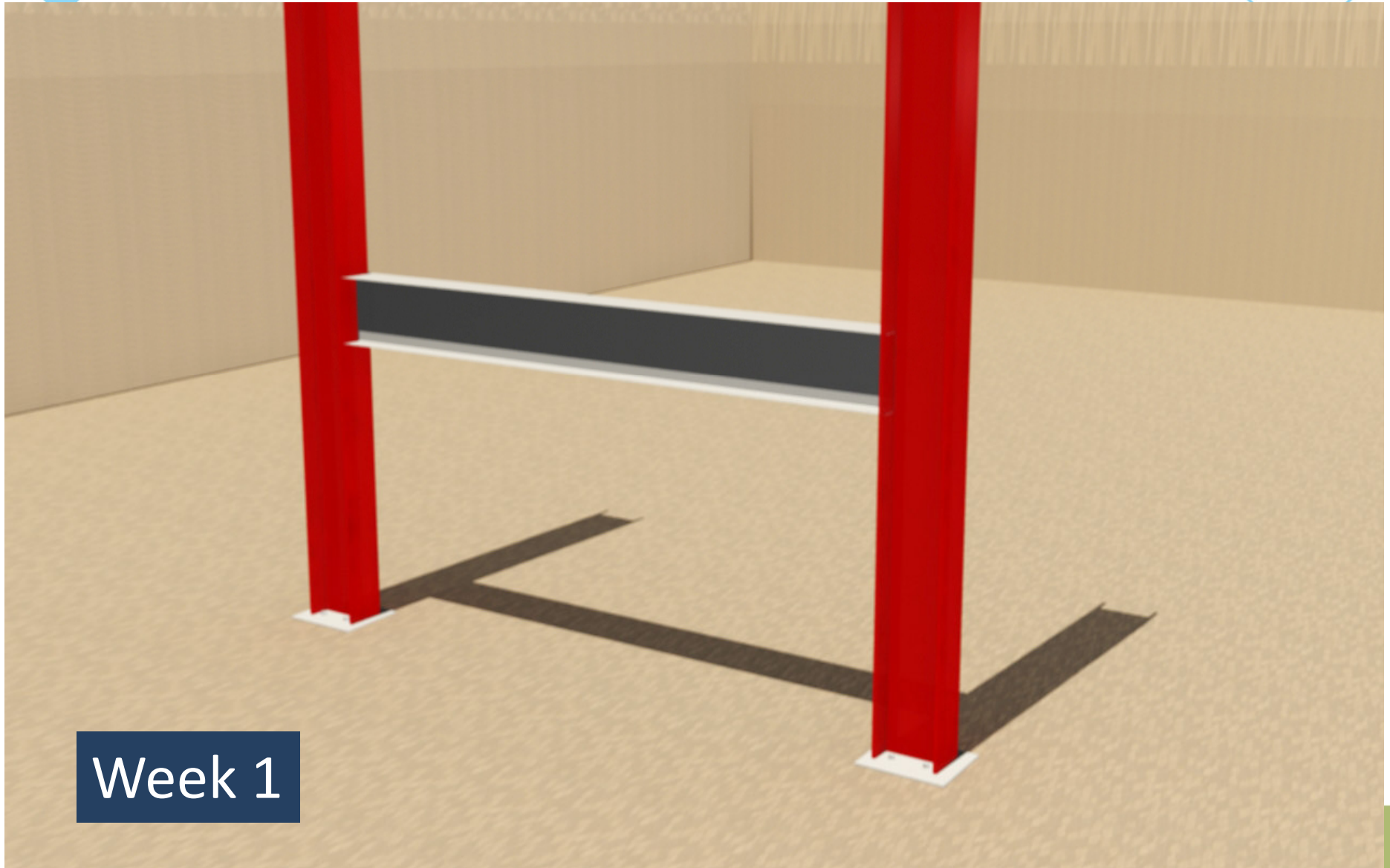


# ANCHOR BOLT CASTING

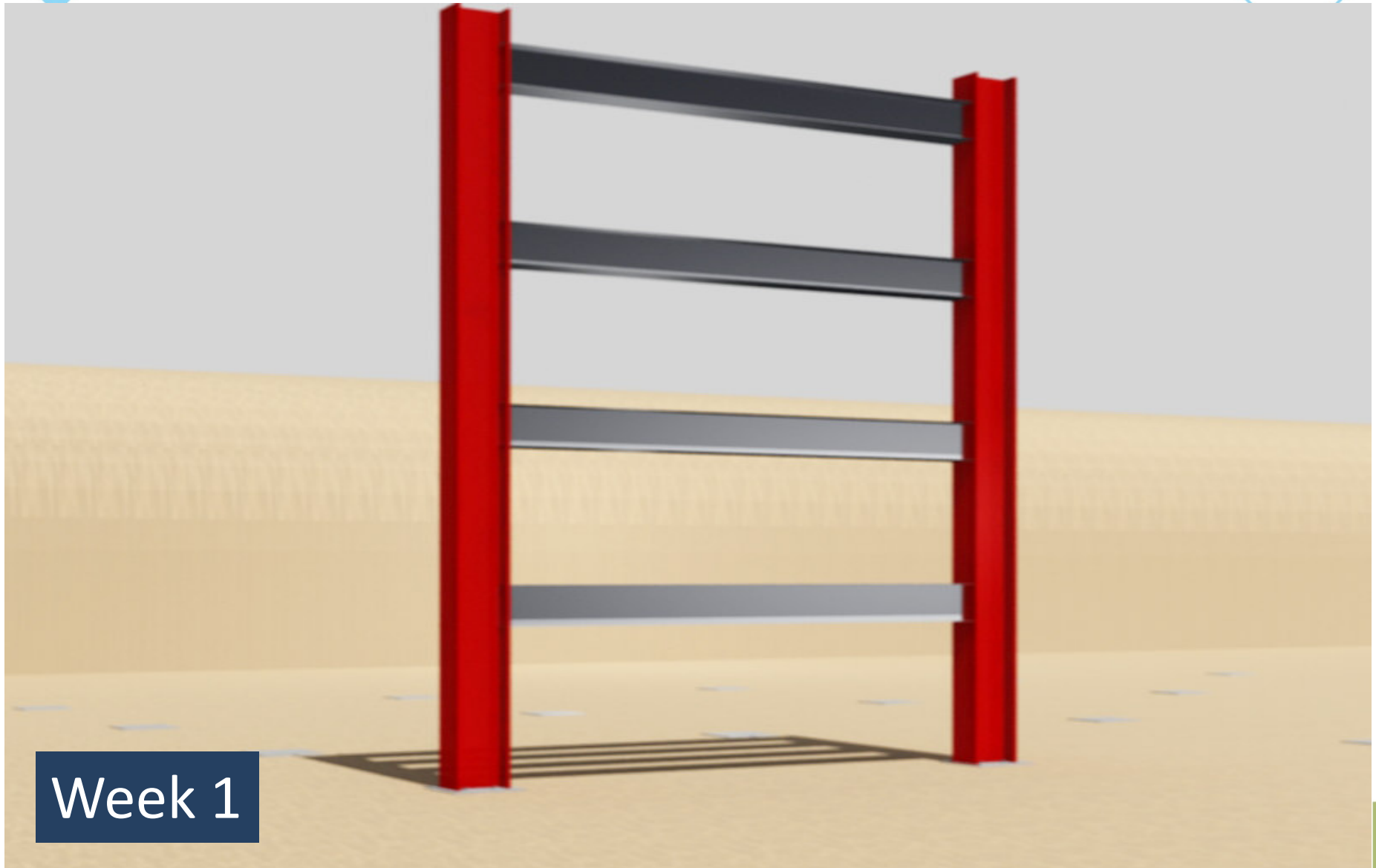
Day 1



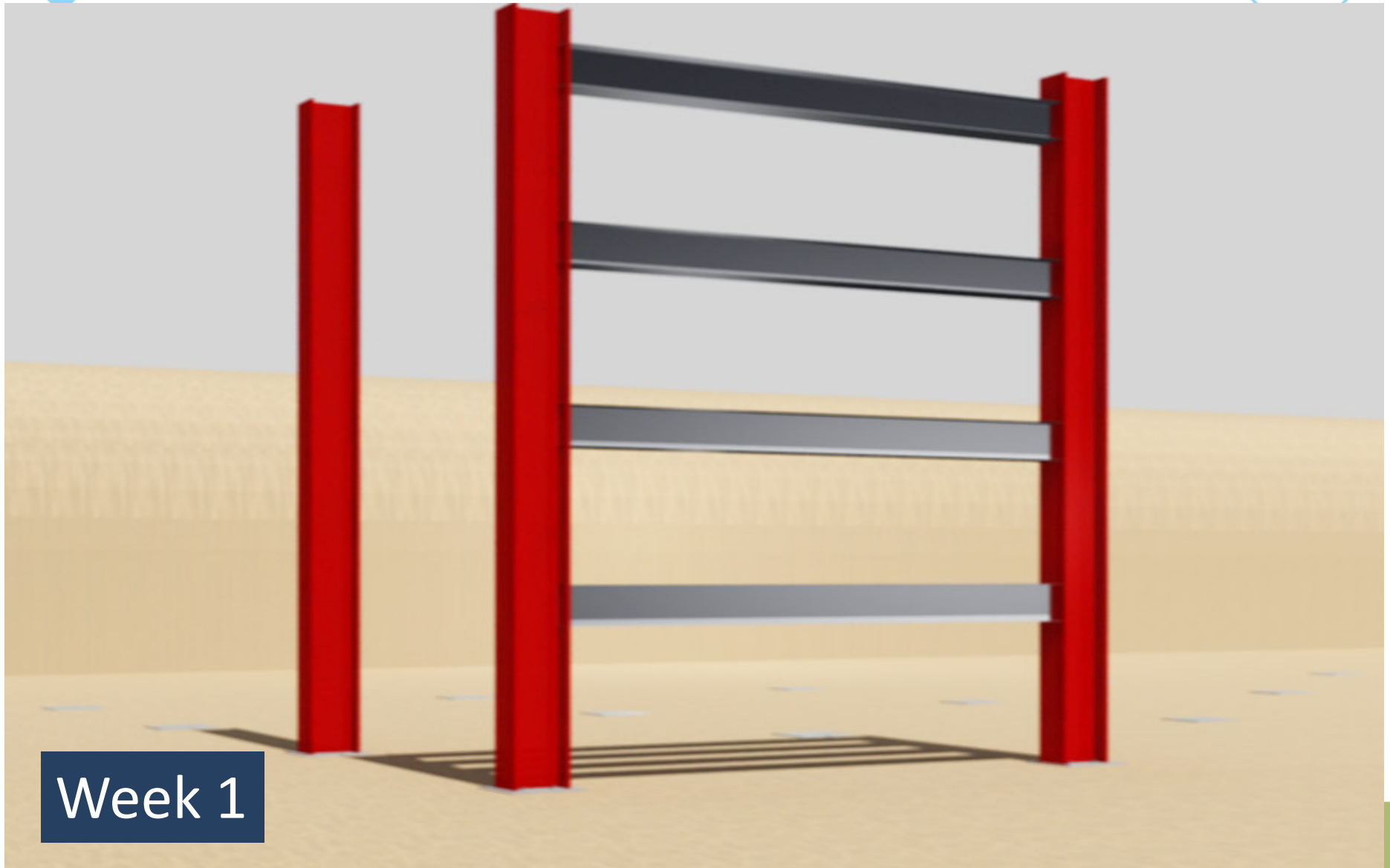




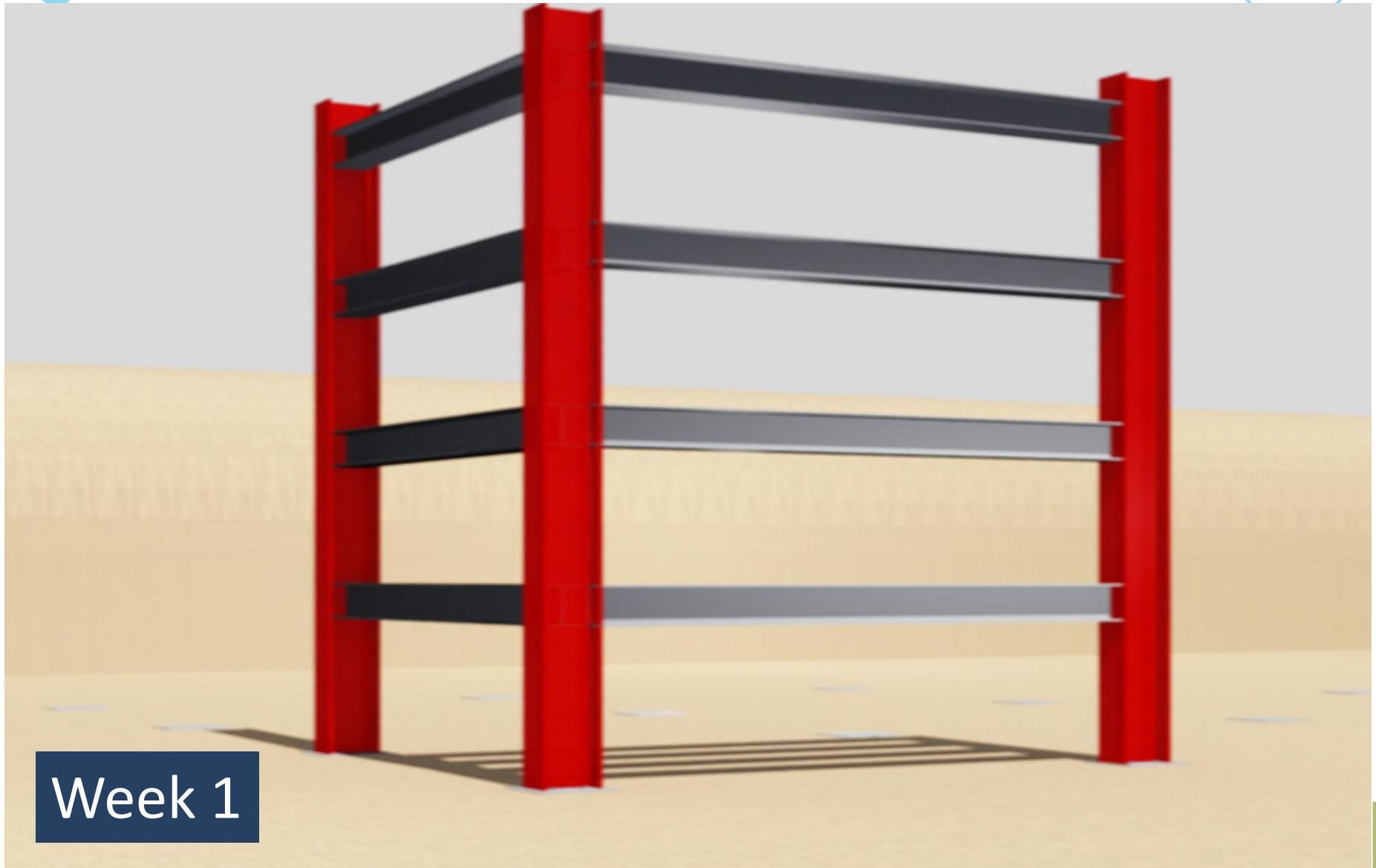
Week 1



Week 1

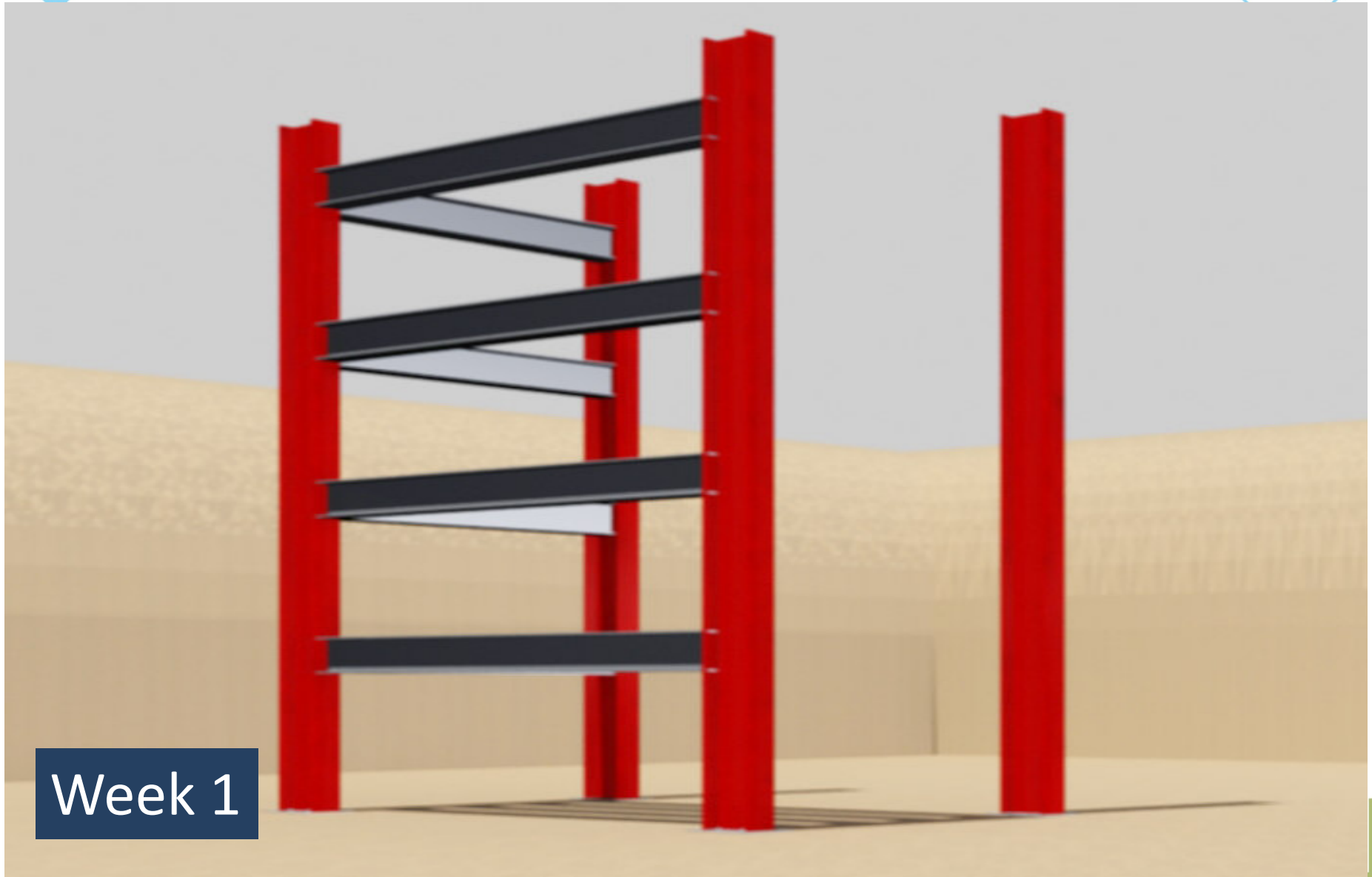


Week 1

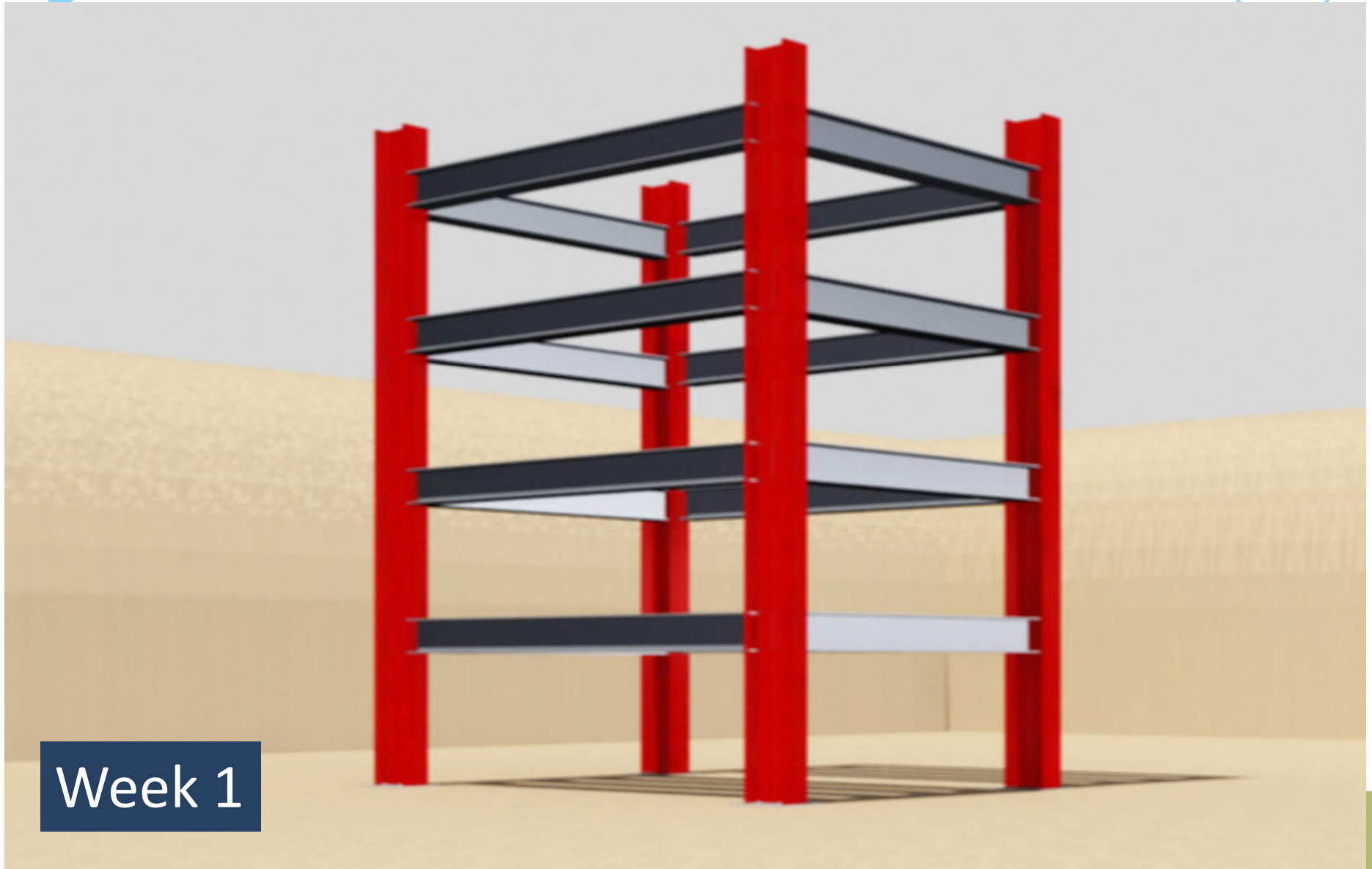


Week 1

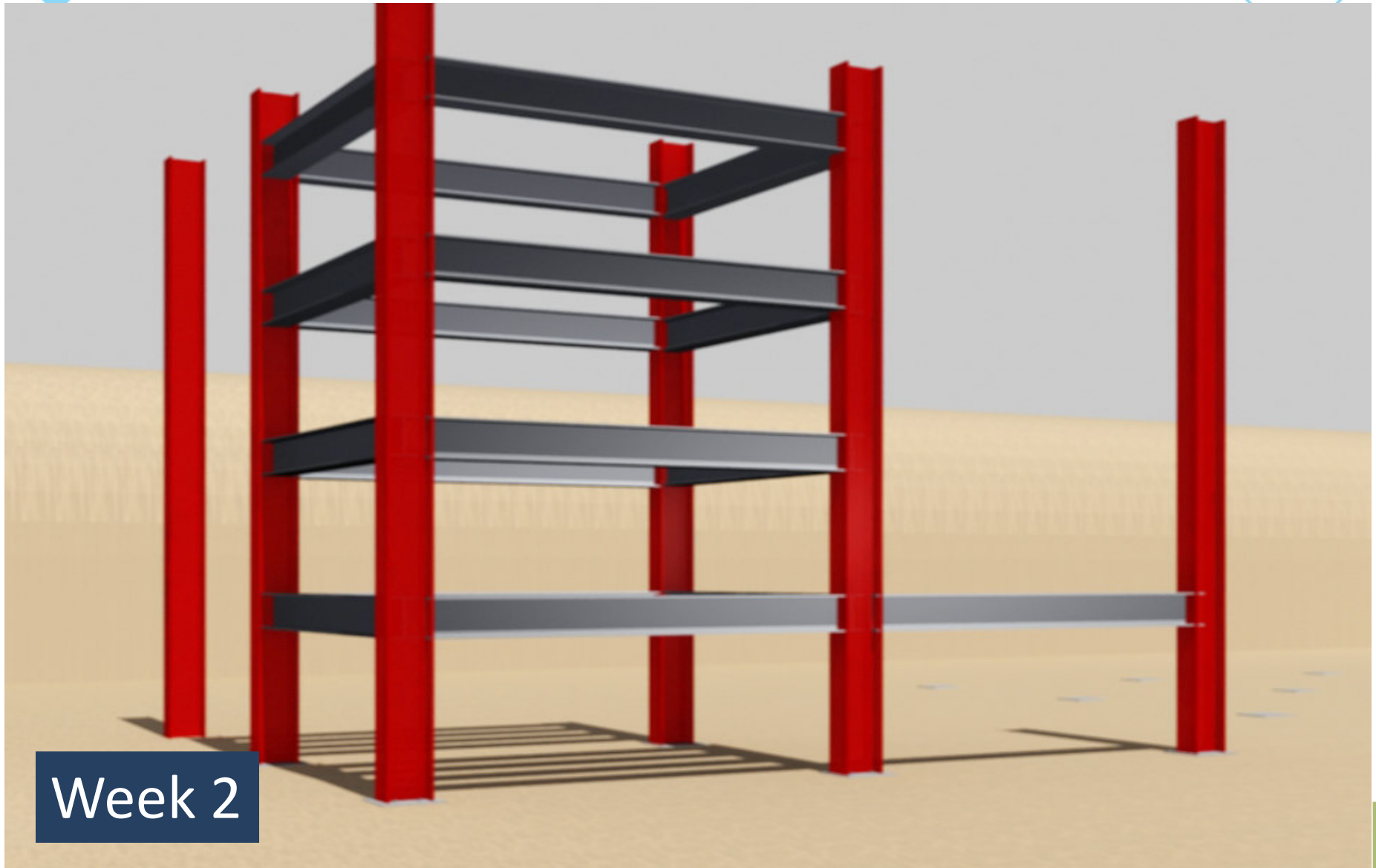




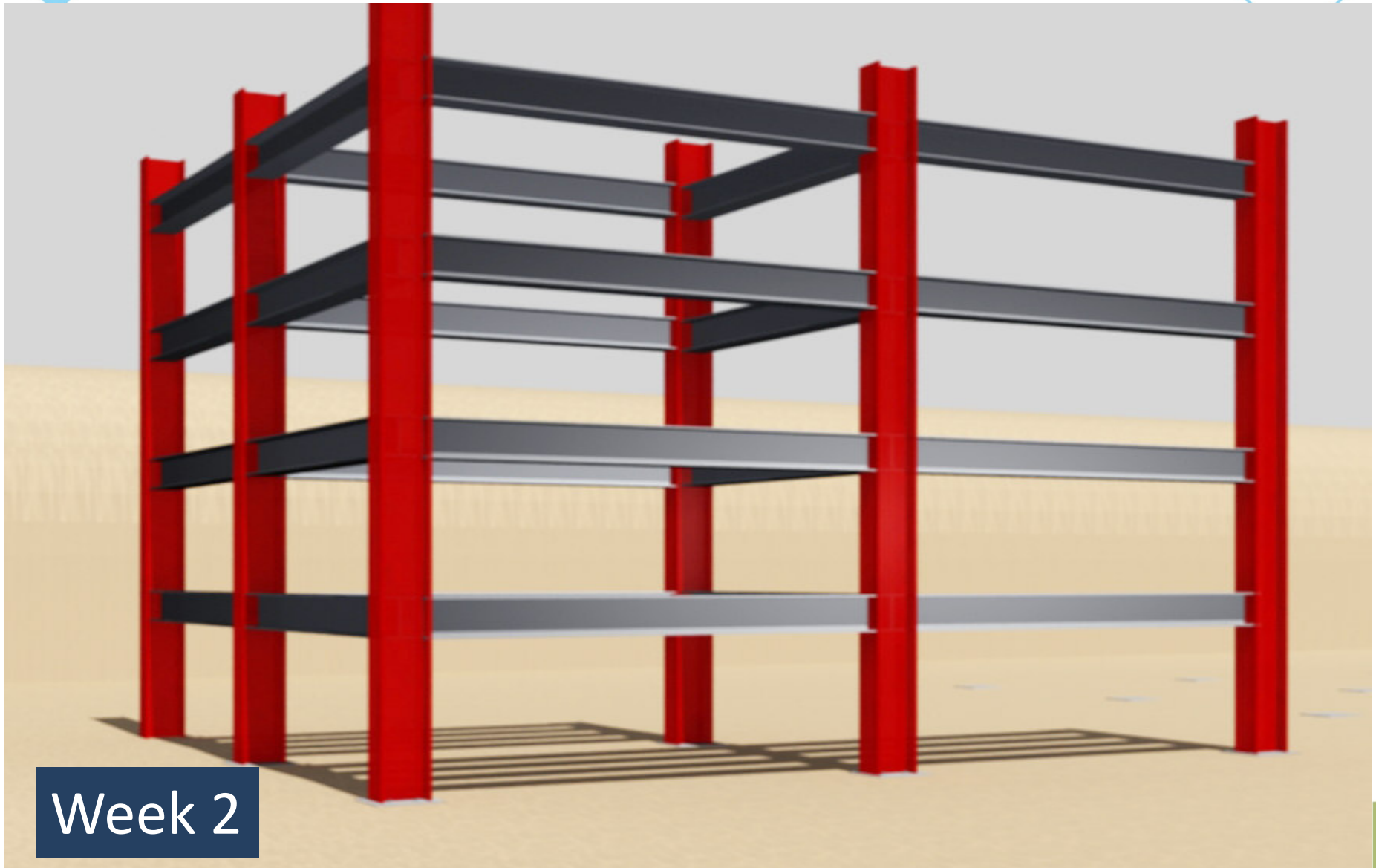
Week 1



Week 1

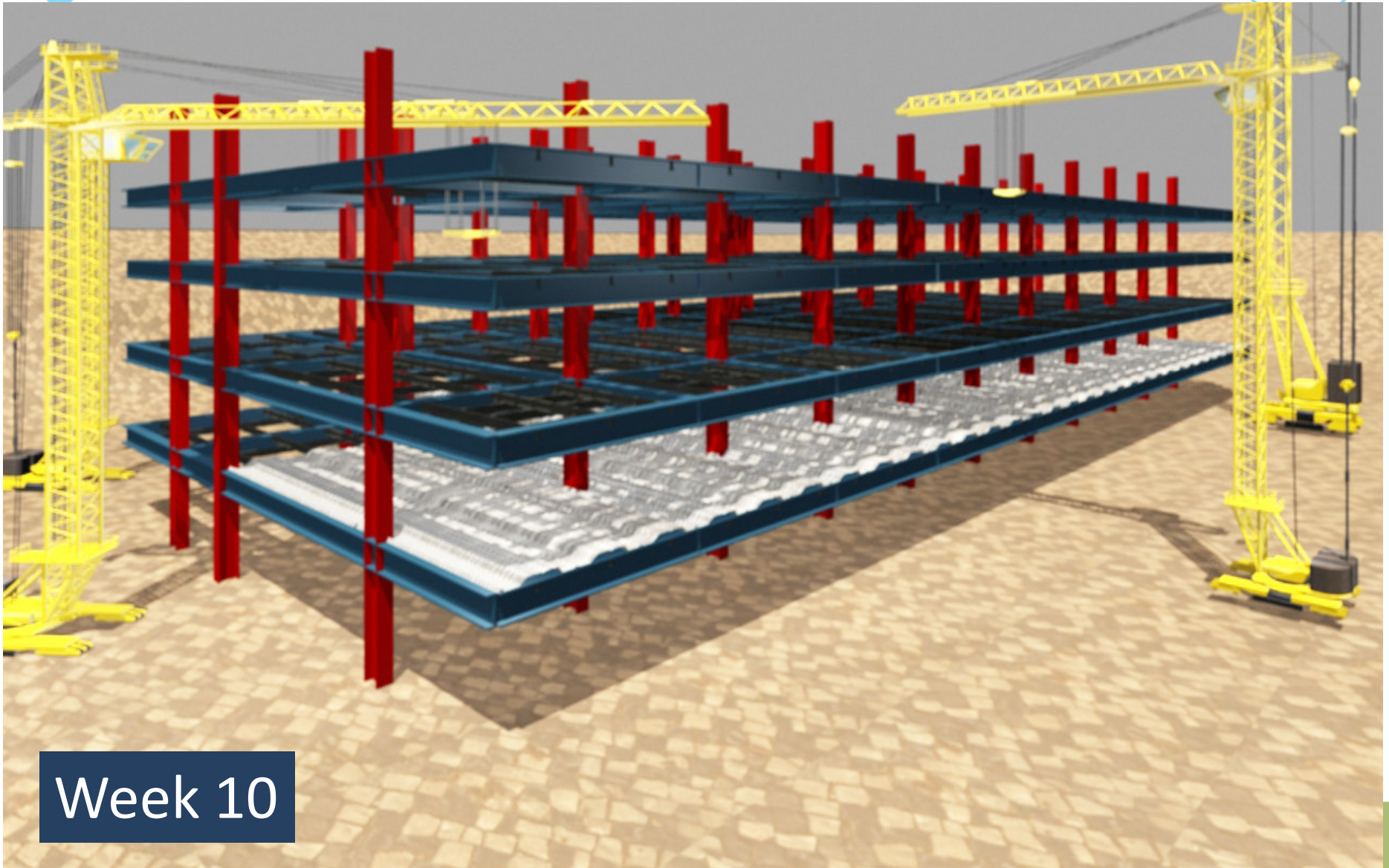


Week 2

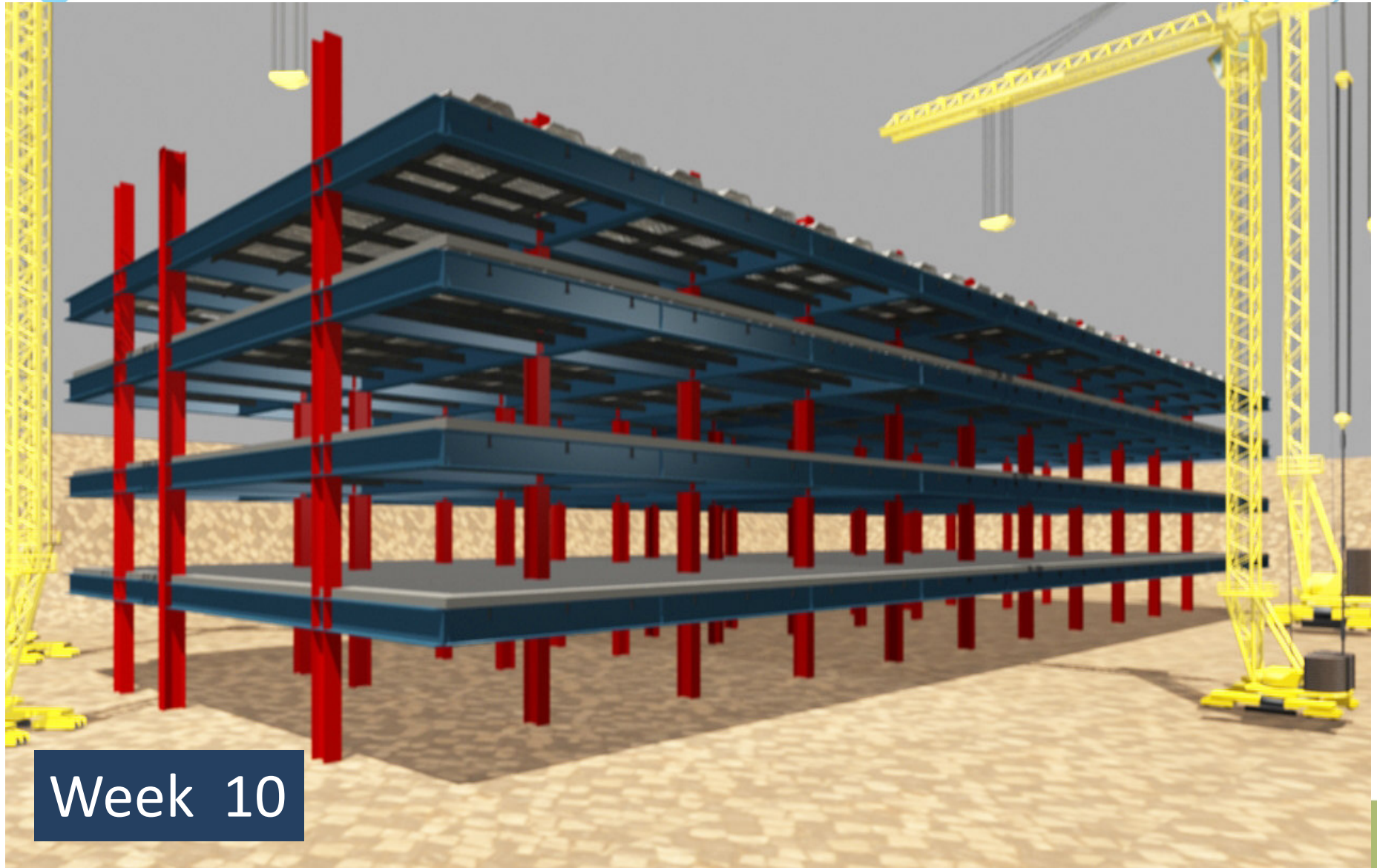


Week 2



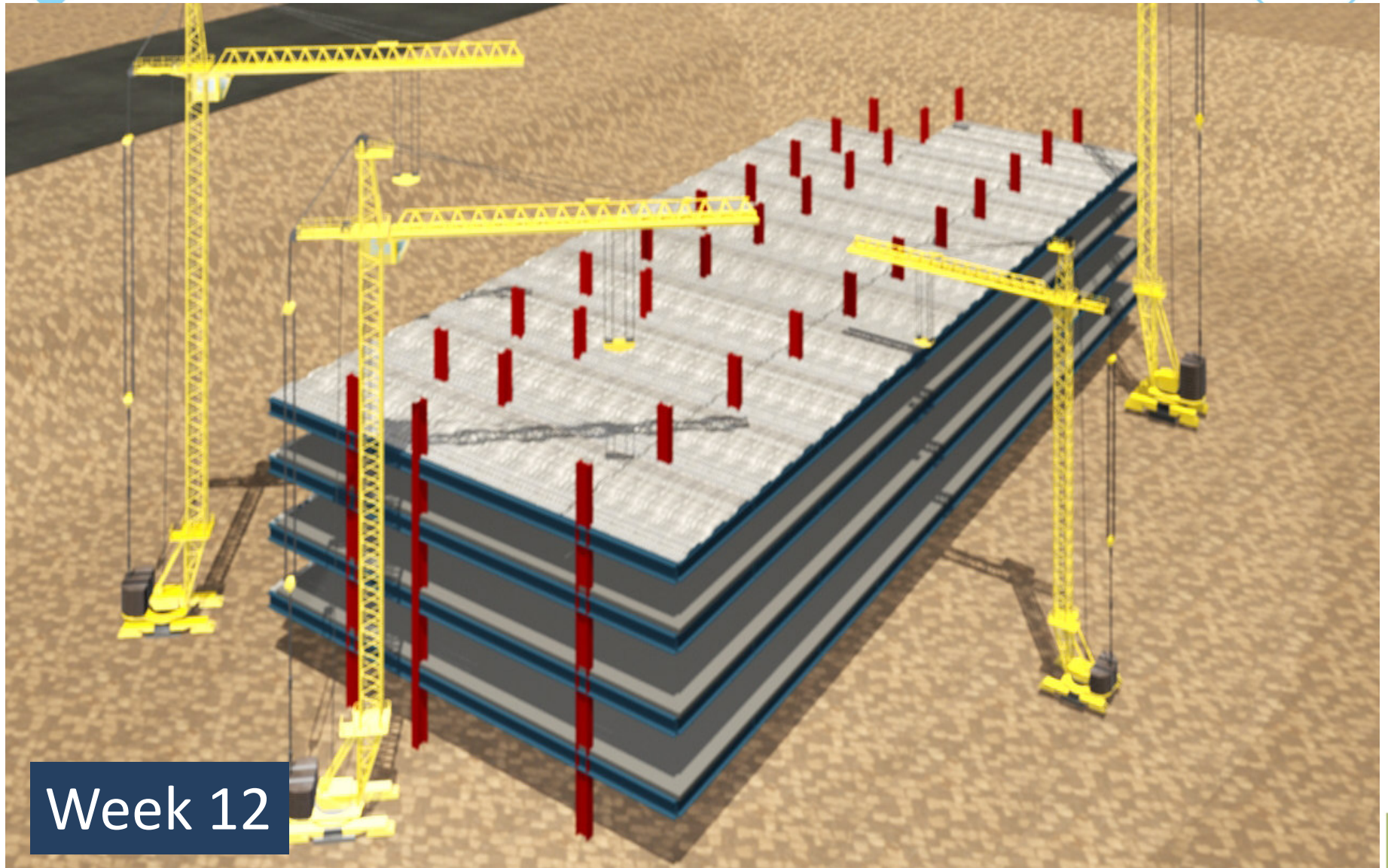


Week 10



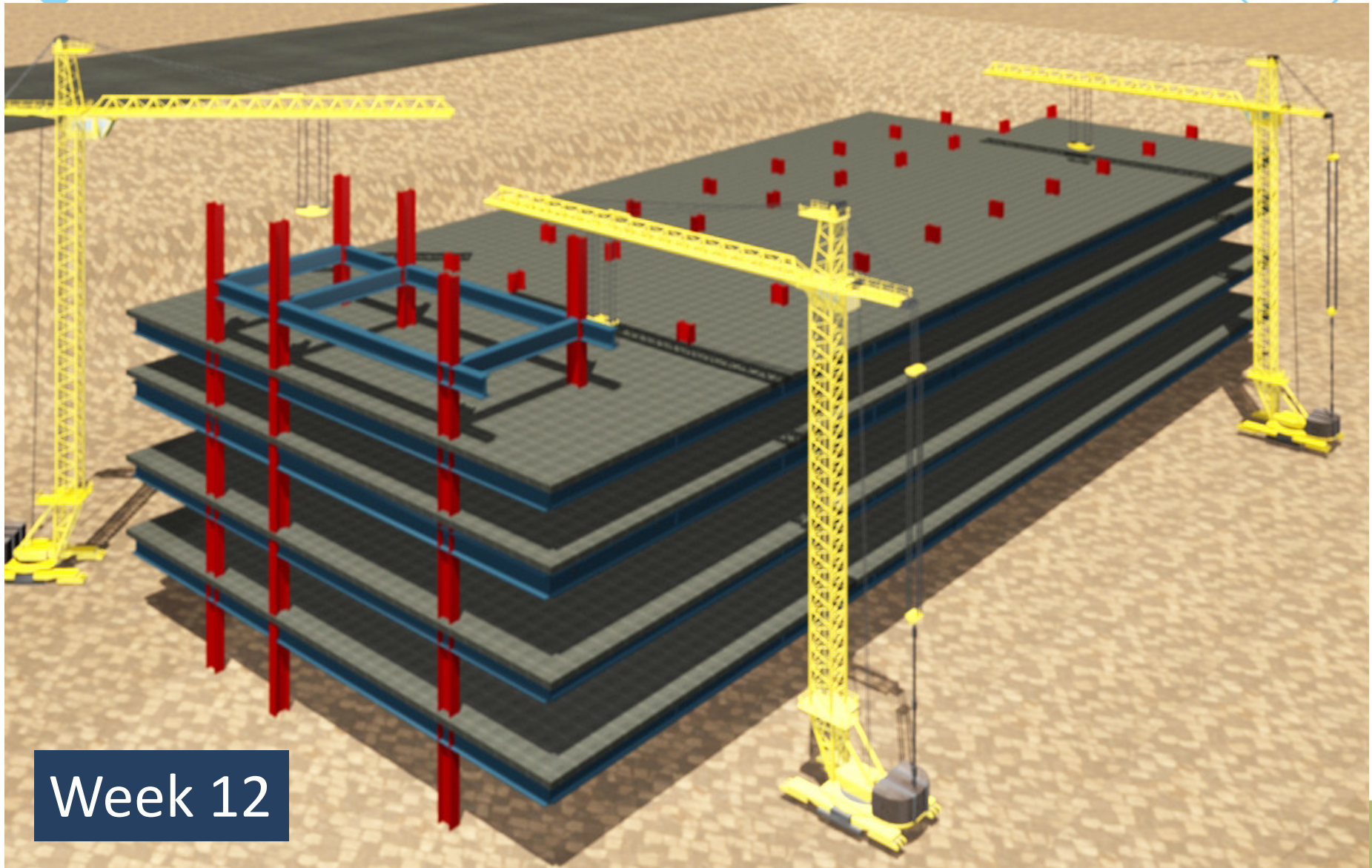
Week 10





Week 12

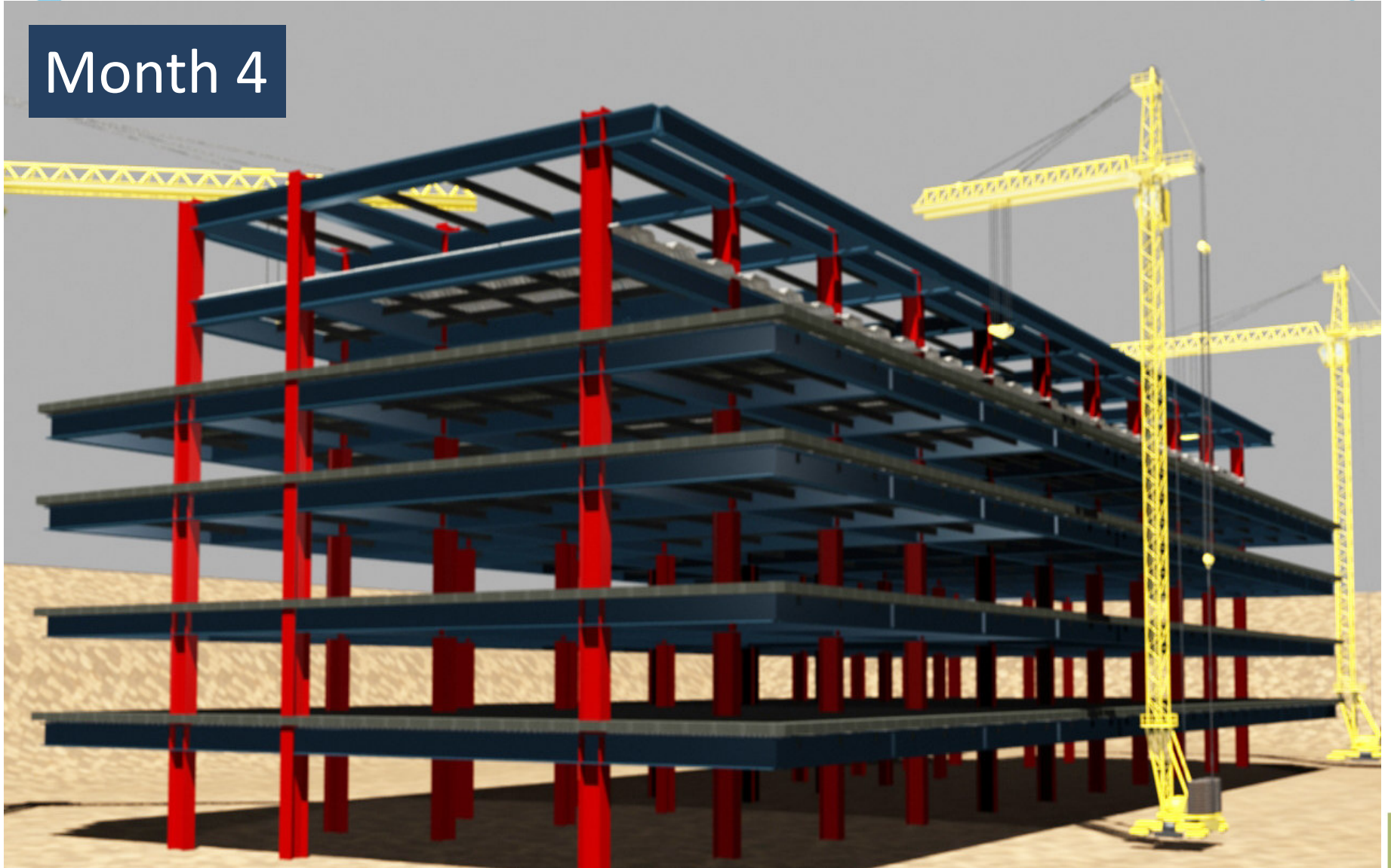




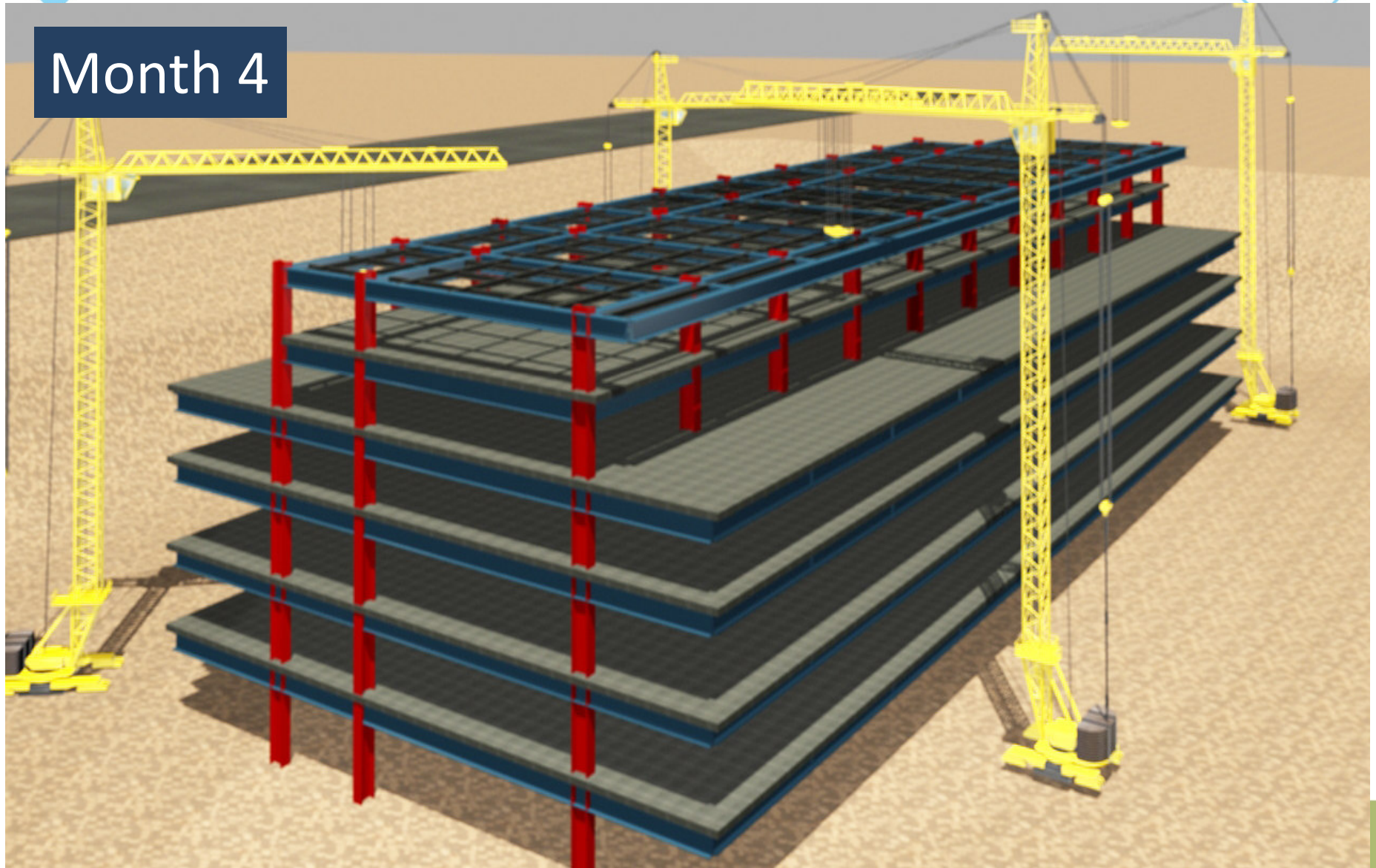
Week 12



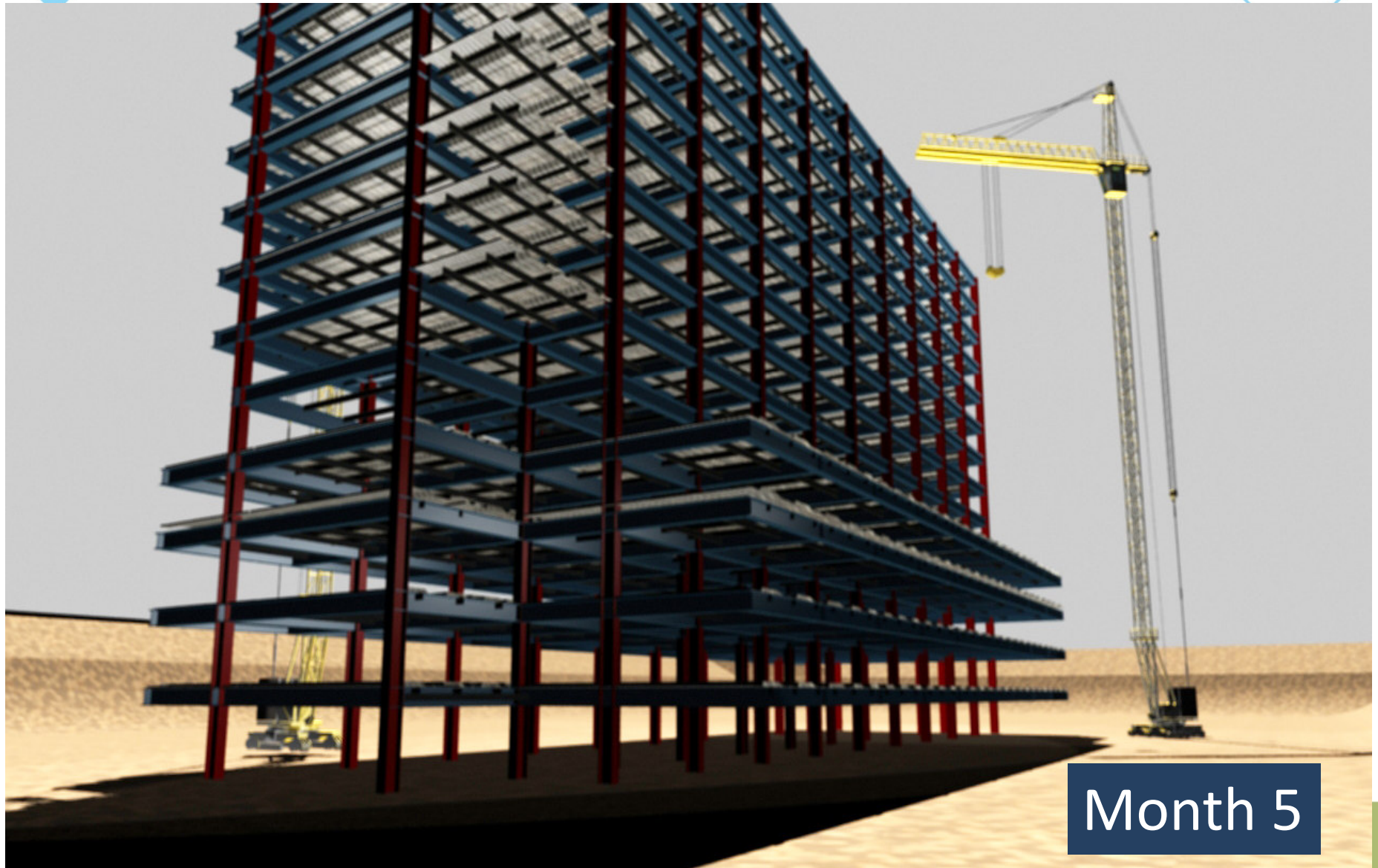
Month 4



Month 4



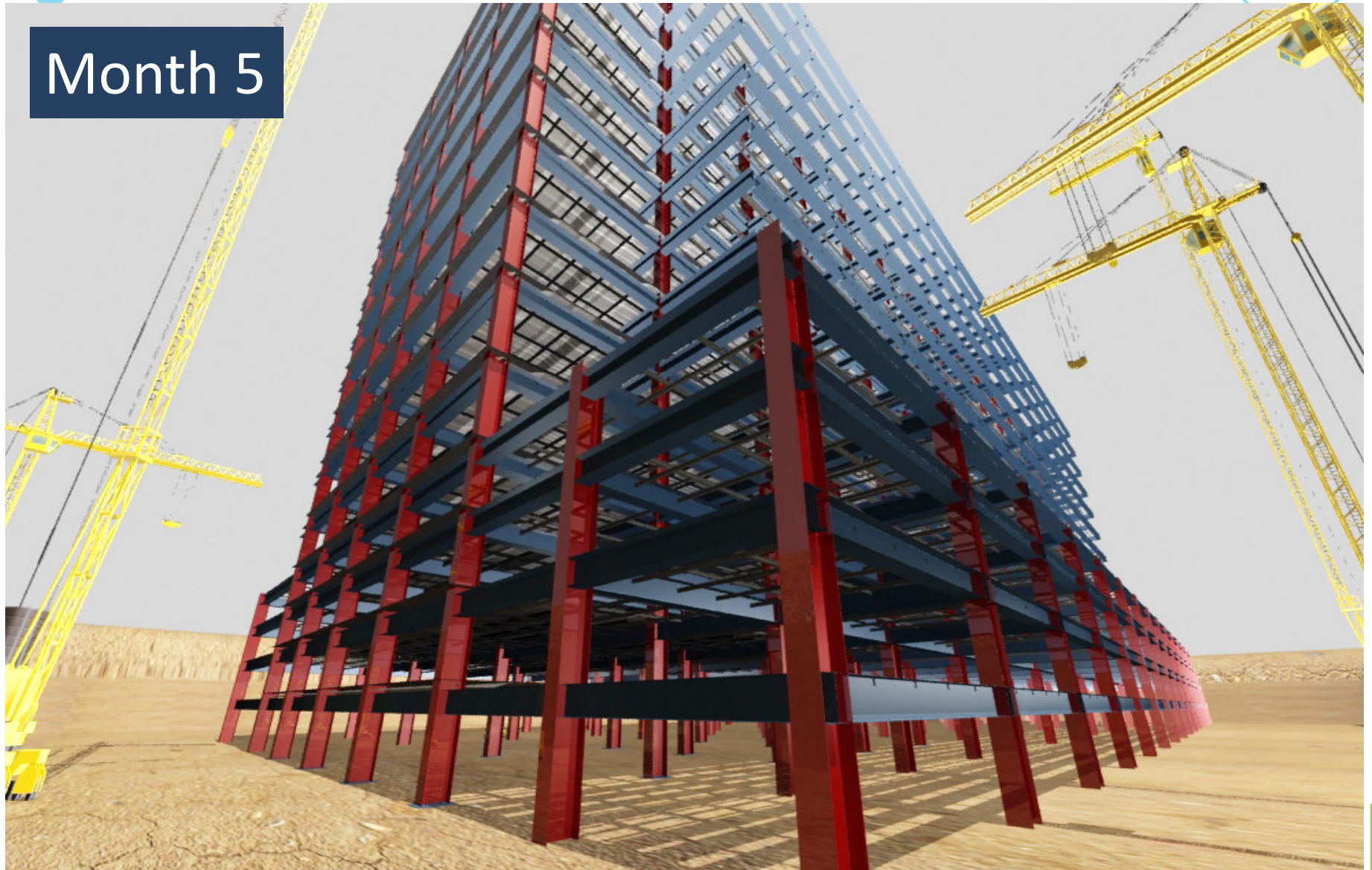




Month 5

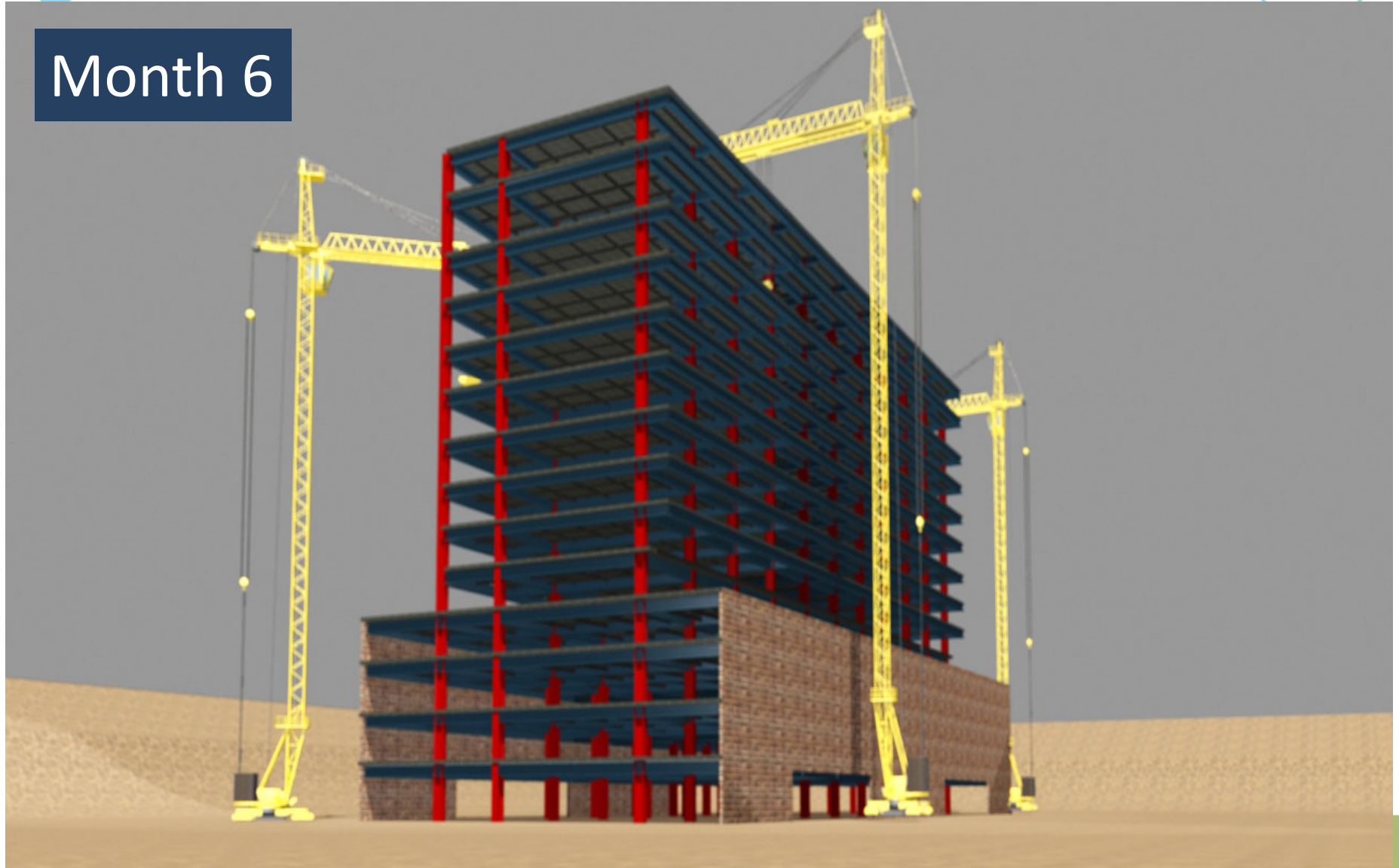


Month 5





Month 6

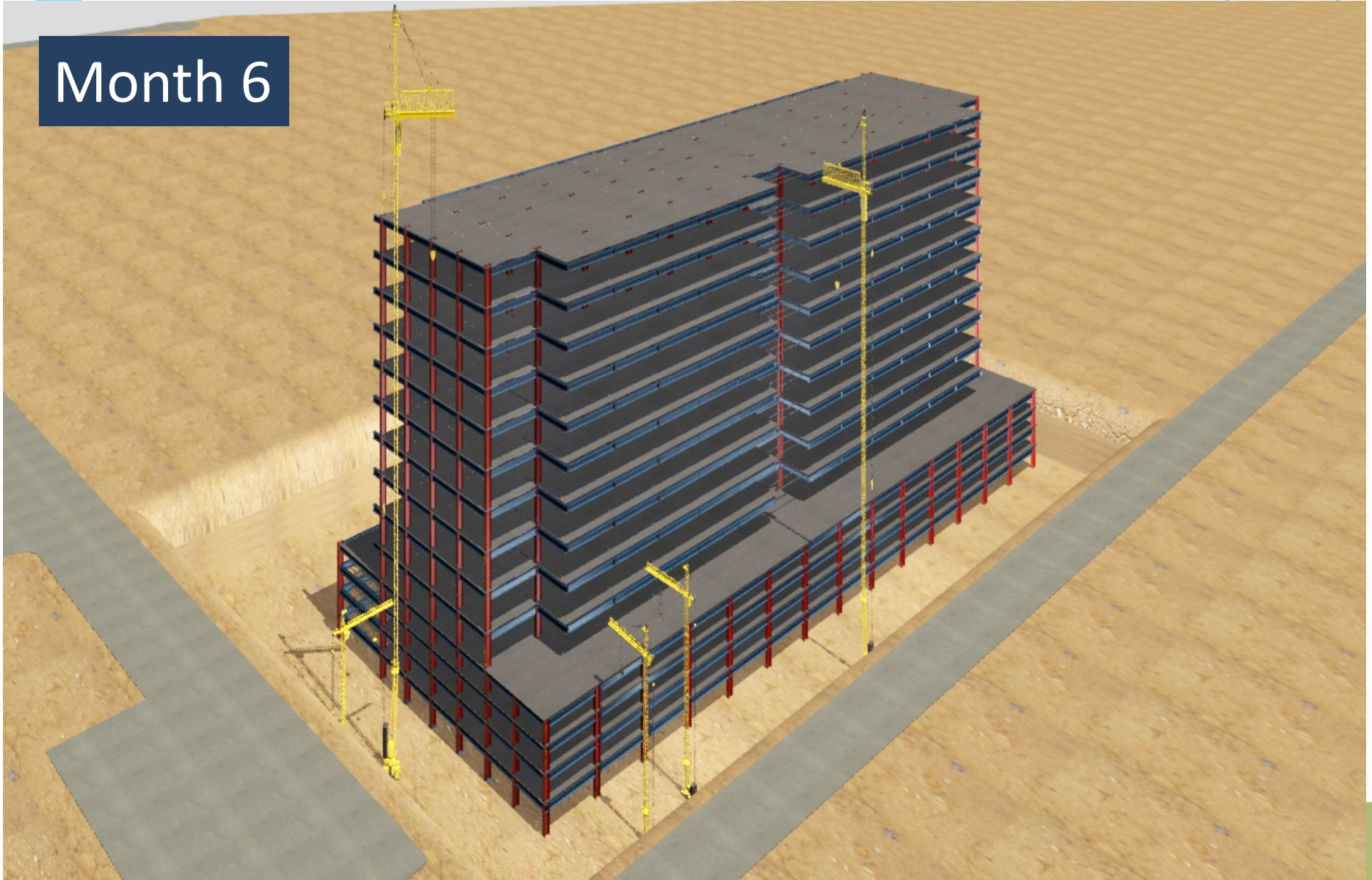


Month 6





Month 6





Month 9







# LANDMARK PROJECTS

# Jayabheri Orange County, Multi-storied building G + 10, Hyderabad

**pebs**  
**pennar**  
SHAPING YOUR IMAGINATION





## GMI Projects (Platina), Hyderabad





# Bharat Biotech, Multi-storey G+7, R&D center, Hyderabad

**pebs  
pennar**  
SHAPING YOUR IMAGINATION



**DOUBLE LOK® 360°  
STANDING SEAM**



**85,000sft**

# Dr. Reddy's Laboratories Limited, Baddi, HP

**DOUBLE LOK® 360°  
STANDING SEAM**





## Lu Lu Mall – Multi Level Car parking (Sobha Developers), Kochi





## Gland Pharma, Hyderabad – G+3 Lab building





## Residential Project, Hyderabad – G+8





**Visweswara Rao(team Constructions),  
Vijayawada – Convention Center**





# Quest SEZ Ltd - Research Center for Rolls Royce, Belgaum





# OTHER PEB SOLUTIONS



- ❖ Temporary Site offices
- ❖ Security Rooms
- ❖ Container rooms



# PROJECT PHOTOGRAPHS



# PROJECT PHOTOGRAPHS

**IOT Infrastructure & Energy Services Ltd. building for ONGC OPAL, the length of the building is approx. 1 km, Gujarat**





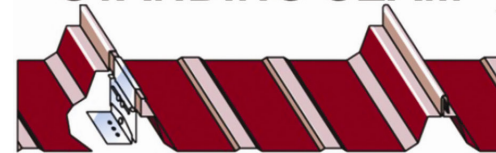
*Stacker Reclaimer Building for UltraTech Cement Ltd.,  
at Kotputhli*



## Reliance Retail – National Distribution Center, Pune



**DOUBLE LOK® 360°  
STANDING SEAM**



**Area: 4 lakh sft**



# *Tata Steel Processing & Distribution Ltd., Chennai*



## Schneider Electric, Bengaluru

**DOUBLE LOK® 360°  
STANDING SEAM**





## Mandana Industries, Tarapur , Pune

**DOUBLE LOK® 360°  
STANDING SEAM** \*



*Asian Color Coated (I) Limited, Khopoli, Maharashtra*

**Area: 36,500 sqm**





## Schindler India, near Pune



## UltraTech Cement Limited, Hirmi, Chhattisgarh



**65m clear span**



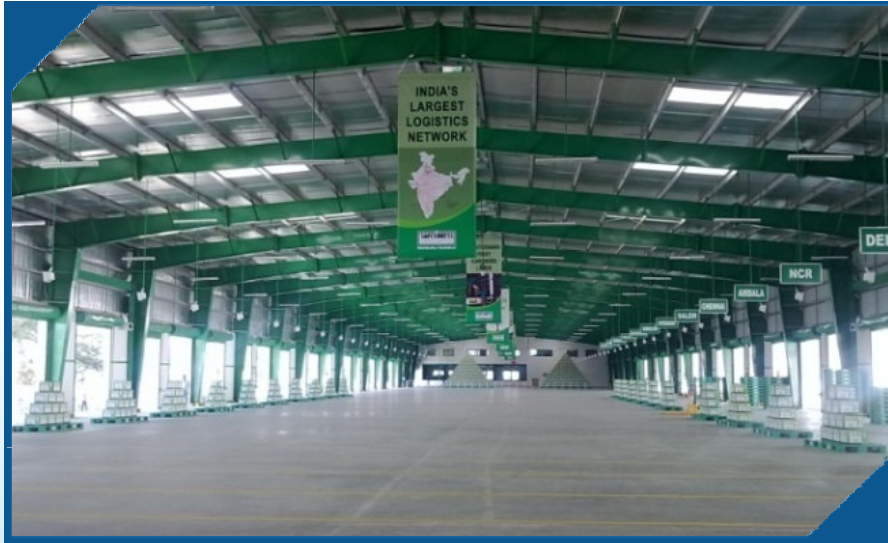


*My Home Industries, 700m long building,  
Visakhapatnam*



**Length: 710m**

## Safexpress – Indore





# UltraTech Cement Limited, Ginigera, Karnataka



## *E-Polymer Inside View –Hyderabad*





## LNVTechologies Limited , Trichy

**100MT crane- 2 No.s**  
**25MT crane- 2 No.s**



## 4G Towers for Reliance Jio Infocomm





# OUR ELITE CUSTOMERS/END USERS

		 Reliance Retail	 TOYOTA	 <b>BOSCH</b>	 <i>Glocally Entrepreneurial</i>
 Reliance Jio Infocomm		 ITC Limited		 Schneider Electric	 <b>Schindler</b>
			 ULTRA TECH GROUP		
 DR. REDDY'S	 Ambuja Cement <i>Best Compressive Strength</i>	 THERMAX	 LNV Technology	 Core Green	
	 ACCIL	 MYHOME GROUP	 CUMI	 Mahindra	 SOBHA

# PEBS PENNAR PLANT

## INDIA'S 1ST IGBC GOLD RATED GREEN FACTORY



**ENTRANCE CANOPY**



**HEADER BAY**



**FABRICATION BAY**



**CANTEEN**



# THANK YOU

